

FTE-8100

Features:

- Up To 98 Channels
- 50GHz or 100GHz Bar Graph or Table Mode
- 6GHz HiRes Line Graph Mode
- Auto Pass/Fail Video Inspection Scope Option
- PM and VFL Options Also Available
- Pass/Fail Thresholds
- 12 Hour Li-ion Battery Pack
- Fast Real Time with <1/2 second Update
- Solid State Optics - No Moving Parts
- Auto Test Mode Zooms in on Active Channels
- Rugged Case w/Impact Resistant Boot
- 4" Touch Color Display
- Stores up to 1000 tests
- USB/PC Port



Hand Held Optical Spectrum/Channel Analyzer

The FTE-8100 Optical Spectrum Analyzer is one of the most rugged and affordable full featured Mini OSAs on the market. This C-band hand held OSA is available in up to 98 channels with 50 and 100 GHz channel spacing. The FTE-8100 is simple and fast to use with its touch screen operation and twice a second scan. It offers high end features such as power tilt monitoring for DWDM channel equalization.

With a full set of selectable scale limits and thresholds, the FTE-8100 makes zeroing in on channel measurements easy. For flexibility, the channel numbers are selected in wavelength or frequency. The information is displayed in graph, table or in 6GHz line graph mode, on the 4" bright color touch screen. This unit allows users to set pass/fail thresholds and can store up to 1000 tests that can be downloaded via the USB PC port. Documentation is fast and easy with the included Cert-Soft certification software. The onboard Help system assists new users in parameter setup and file manipulation.

The FTE-8100 is available with an IEC61300-3-35 auto Pass/Fail video inspection scope, (probe sold separately) power meter or VFL options.



Terahertz Technologies Inc.

169 Clear Rd., Oriskany NY 13424 Toll Free: 888-U.S.- OTDRS
Phone: 315-736-3642 Fax: 315-736-4078
sales@teratec.us www.teratec.us

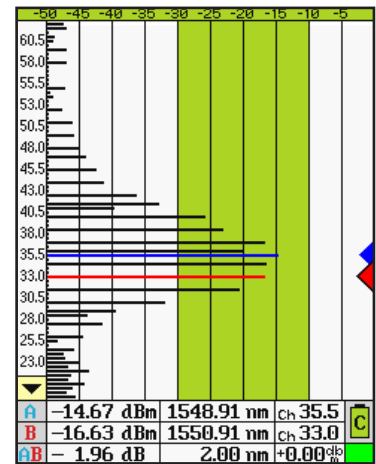


Made In the USA

FTE-8100

Hand Held OSA Specification	
Wavelength Range	Channels 14 - 62.5 196.25THz - 191.4THz 1527.6 -1566.31nm
Channel Spacing	50GHz, 100GHz
Wavelength Accuracy	±0.1nm
Channel Power Ranges	Low Range Port -50dBm to -10dBm, High Range Port -30dBm to +10dBm
Absolute Accuracy	±1 dB
Max Composite Power	+28 dBm
PDL	±0.15dB
Optical Rejection Ratio	40dBc (@50GHz)
Measurement Time	< 1/2 Second
Readout Resolution	0.01dB
Return Loss	>40dB
General	
Optical Interface	SC/APC or SC/APC
Graphical Display	bar graph, table view and 6GHz Line Graph
Display	4 in. touch color TFT
Dimensions	7.62" L x 3.88" W x 1.56" H (194mm L x 99mm W x 40mm H)
Weight	1.6 lbs.
Battery	LI-ion 12 hrs. typ
Power	100-240V input universal US, GB, EU, AU Mains, 15VDC Output
Operating Temperature	-10°C to 40°C
Storage Temperature	-20°C to 60°C
Accessories Included	Universal power supply with mains for US, UK, EU and AU. ships with SC/APC or SC/UPC as ordered, CertSoft Software Suite, USB cable, manual and rubber boot with tethered stylus
Power Meter Specifications	
Detector Type	InGaAs
Connector Type	2.5mm Interchangeable
Dynamic Range	+5 to -77dB (CATV - +25 to -57dB)
Calibrated Wavelengths	850,1300,1310,1490,1550,1625nm
Power Measurement Uncertainty	± 0.18 dB under reference conditions, ± 0.25 dB from 0 to -65 dBm, ± 0.35 dB from 0 to +5 dBm and from -65 to -77 dBm
Units of Measurement	dBm, dB
Resolution	.01 dB

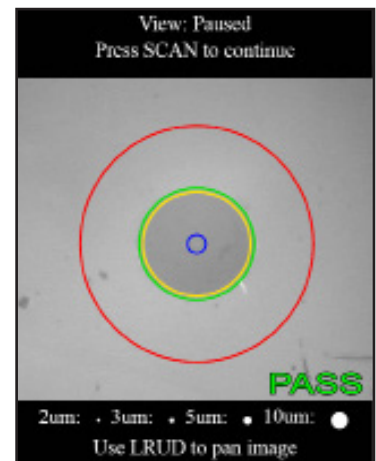
TTI reserves the right to change specifications without notice



Graphical View

62.5	50.0	37.5	25.0	-48.03			
62.0	-48.56	43.5	-46.14	37.0	-17.25	24.5	-46.54
61.5	43.0	36.5	24.0	-49.06			
61.0	-48.56	46.5	36.0	23.5	-46.43		
60.5	-48.88	48.0	-45.03	35.0	-14.31	23.0	-44.30
60.0	47.5	35.0	22.5	-47.33			
59.5	-47.42	47.0	34.5	-28.14	22.0	-44.57	
59.0	-48.87	46.5	-44.17	34.0	-17.97	21.5	-44.11
58.5	-49.43	46.0	33.5	-48.59	21.0	-47.20	
58.0	-48.02	45.5	-41.94	33.0	-16.02	20.5	-43.84
57.5	45.0	32.5	20.0	-45.98			
57.0	-48.98	44.5	32.0	19.5	-47.56		
56.5	44.0	-39.84	31.5	-16.48	19.0	-45.25	
56.0	43.5	31.0	18.5	-48.17			
55.5	43.0	30.5	18.0	-48.10			
55.0	-47.77	42.5	-37.23	30.0	-28.96	17.5	-46.48
54.5	-47.62	42.0	29.5	17.0			
54.0	41.5	29.0	16.5				
53.5	-47.90	41.0	-32.71	28.5	-35.46	16.0	
53.0	40.5	28.0	15.5				
52.5	40.0	-28.30	27.5	-39.71	15.0	-49.39	
52.0	-48.36	39.5	-33.05	27.0	-46.36	14.5	-49.10
51.5	39.0	26.5	14.0	-42.36			
51.0	-46.07	38.5	-23.25	26.0	-42.82		
50.5	38.0	25.5					

Table View with Pass/Fail Indication



IEC61300-3-35 Auto Pass/Fail Video System



Terahertz Technologies Inc.
169 Clear Rd., Oriskany NY 13424 Toll Free: 888-U.S.- OTDRS
Phone: 315-736-3642 Fax: 315-736-4078
sales@teratec.us www.teratec.us



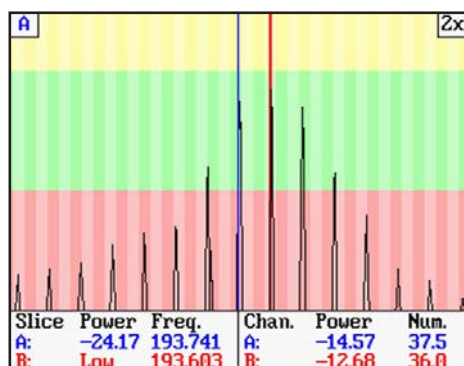
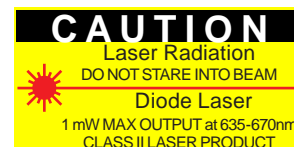
Made In the USA

FTE-8100

Visible Fault Locator	
Emitter Type	Laser
Wavelength	650nm ±5nm
Laser Safety Class	Class IIFDA21 CFR1040.10 &1040.11 IEC 825-1: 1993
Connector Type	2.5mm Universal
Output Power	1mW Max.

TTI reserves the right to change specifications without notice

Visible Fault Locator



6 GHz Line Graph Mode with High, Low and Pass Threshold Indications

Ordering Information	
FTE-8100-C-A-VP	98 Channel, C Band Hand Held Optical Spectrum Analyzer with SC/APC Adapters. Includes Video Inspection Port for use with the Video Inspection Probe (Sold Separately)
FTE-8100-C-A-PM	98 Channel, C Band Hand Held Optical Spectrum Analyzer with SC/APC Adapters. Includes Broadband Power Meter
FTE-8100-C-A-VFL	98 Channel, C Band Hand Held Optical Spectrum Analyzer with SC/APC Adapters. Includes Visual Fault Locator
FTE-8100-C-U-VP	98 Channel, C Band Hand Held Optical Spectrum Analyzer with SC/UPC Adapters. Includes Video Inspection Port for use with the Video Inspection Probe (Sold Separately)
FTE-8100-C-U-PM	98 Channel, C Band Hand Held Optical Spectrum Analyzer with SC/UPC Adapters. Includes Broadband Power Meter
FTE-8100-C-U-VFL	98 Channel, C Band Hand Held Optical Spectrum Analyzer with SC/UPC Adapters. Includes Visual Fault Locator
VIS-300	Video Inspection Probe



歲望有限公司

802626 高雄市苓雅區新光路38號5樓之1
電話：07-5368282 傳真：07-5368272

WEWANT Co., Ltd.

5F.-1, No.38, Xinguang Rd., Lingya Dist.,
Kaohsiung City 802, Taiwan (R.O.C.)
TEL: +886-7-5368282 FAX: +886-7-5368272

